

SAFE BANKS

“VARIETIES & VARIATIONS”

Presented by: Mike Holz

2008 SBCCA Convention

Orlando, FL

Combination Banks



Handsomely Finished.

Good Combination Lock.

Durable steel sides and back.

Height, 5 inches.

Width, $3\frac{3}{4}$ inches.

Depth, $3\frac{3}{4}$ inches.

No. 50. Polished and Nickel Plated.

No. 50C. Finished in Bright Colored Enamels.

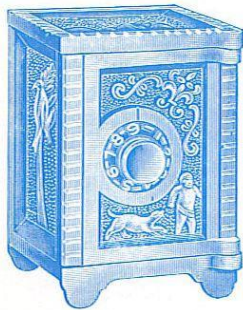
3 Colors assorted in a box.

$\frac{1}{2}$ dozen in a box. 3 dozen in a case. 53 lbs. per case.

Handsome New Design.

Good Combination Lock.

Durable steel sides and back.



Height, 4 inches.

Width, $2\frac{7}{8}$ inches.

Depth, $2\frac{7}{8}$ inches.

No. 80. Nickel Plated.

No. 80C. Finished in Colored Enamels.

3 Colors assorted in a box.

$\frac{1}{2}$ dozen in a box. 6 dozen in a case. 63 lbs. per case.

(All our Banks have slot large enough to accommodate a half dollar or English penny.)

1932 GREY IRON TOYS CATALOG

SAFES CAME NICKEL PLATED AND FINISHED IN BRIGHT ENAMEL

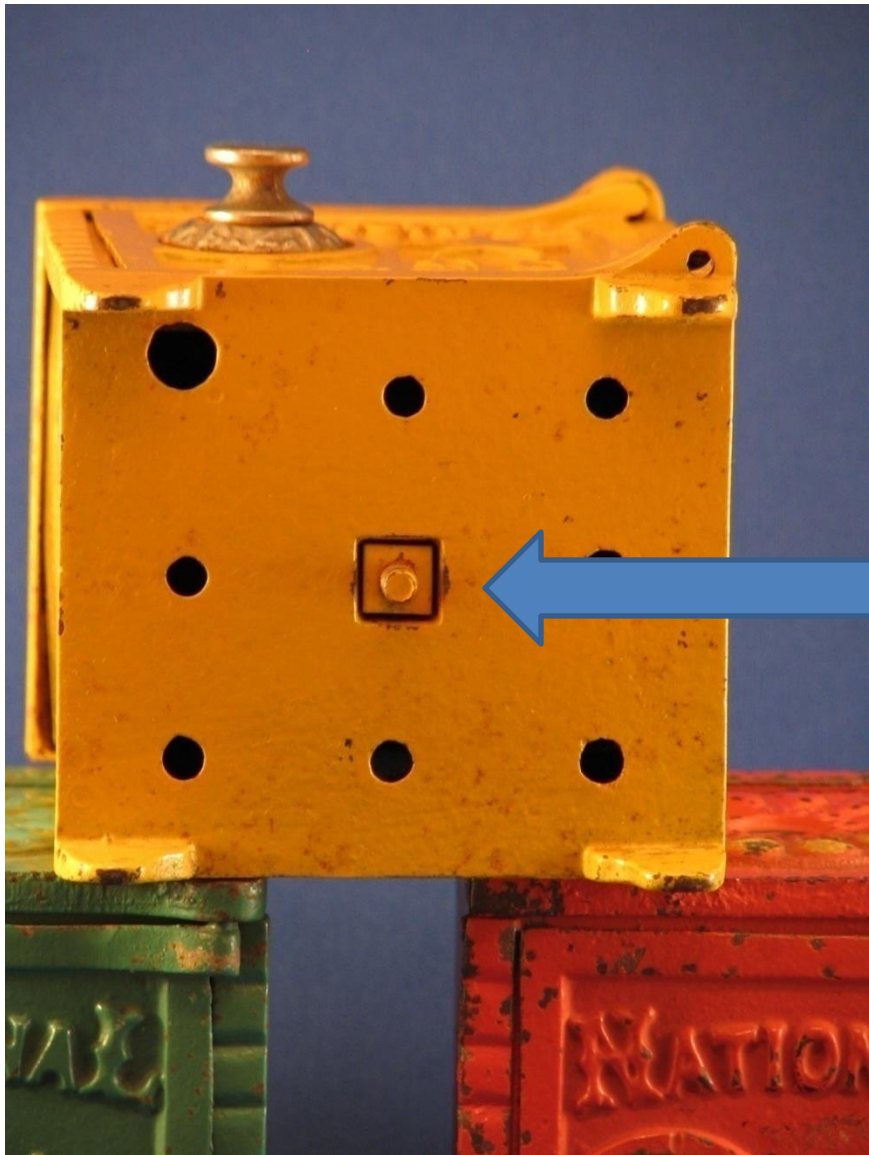
3 COLORS IN A BOX!!!

**MUSTARD
YELLOW**

**SEA FOAM
GREEN**

**CHINESE
ORANGE**





Recessed nut design
unique to safes
manufactured by the
Grey Iron Casting Co.

Found in:
National Safe
Columbus Safe
Coin Deposit Safe

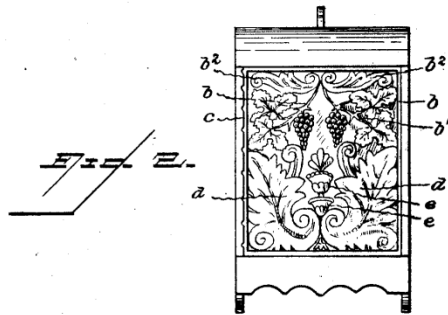
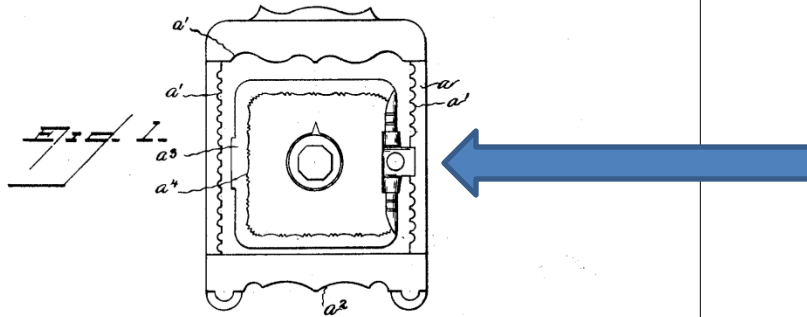
No. 35,864.

DESIGN.

J. W. ESHLEMAN.
TOY BANK.

(Application filed Mar. 24, 1902.)

Patented Apr. 15, 1902.



NOTE
Rivet used to secure
door to the front

DESIGN Patent
No. 35,864

Issued: Apr. 15, 1902

Assigned to
Grey Iron Casting Co.

Witnesses:
R. J. Beall
M. Duwall

John W. Eshleman
Inventor,
by *John B. Thomas & Co.*
Attorney S.

“COIN DEPOSIT BANK”

UNLISTED

Offered by
Grey Iron Casting Co.
CIRA 1900



NOTE

Rivet used to secure door to the front

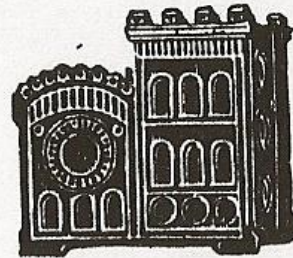
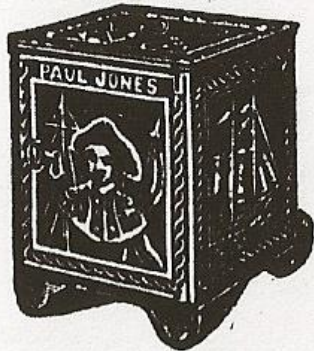


“OLD HOMESTEAD”
ISB# 294

“TENNIS”
ISB # 289

“PAUL JONES”
ISB # 291

Toy Banks.



Nos. 50 and 150.

No. 30.

Nos. 60 and 160.

- No. 50, "Paul Jones," with Lock and Key, $3\frac{3}{8}$ in. high, $2\frac{3}{4}$ in. wide, $2\frac{3}{4}$ in. deep, Bronzed and Ornamented with Gold..... Per gross.....
- 150, "Paul Jones," with Lock and Key, $3\frac{3}{8}$ in. high, $2\frac{3}{4}$ in. wide, $2\frac{3}{4}$ in. deep, Nickel Plated..... ".....
- ½ doz. in a box. 1 gross in a case.
- No. 30, "Toy Bank," Bronzed, $2\frac{1}{4}$ in. high, $2\frac{1}{4}$ in. wide, $1\frac{5}{8}$ in. deep.... Per gross.....
- 1 doz. in a box. 5 gross in a case.
- No. 60, "Old Homestead," with Lock and Key, $4\frac{1}{4}$ in. high, 3 in. wide, 3 in. deep, Bronzed and Ornamented with Gold Per gross.....
- 160, "Old Homestead," with Lock and Key, $4\frac{1}{4}$ in. high, 3 in. wide, 3 in. deep, Nickel Plated..... ".....
- ½ doz. in a box. 2 gross in a case.

**“OLD HOMESTEAD”
(COMBO)**

ISB # 294

**Offered by SHIMER
CIRA
1899-1915**

**NICKLED
OR
JAPANNED**





**From the front this SAFE appears to be the common “KEYLESS LOCK SAFE #50”
patented in 1897 and issued by J.E. STEVENS ...**

But on the reverse it is an ADVERTISING SAFE for J.S. Round & Co. Jewelers.

**This is a different casting from “KEYLESS LOCK SAFE #50”.
Parts are not interchangeable.**

This bank is UNLISTED.

**GEM SAFE
(KEY LOCK)**

UNLISTED

**Offered by
J.E. STEVENS
Cira 1915**





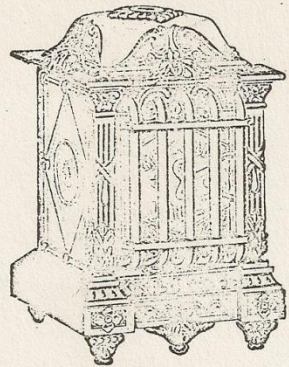
Regularly found in black paint with gold, silver or copper details, KYSER & REX also offered many of their safes in nickel plate.



**AMERICAN VAULT
(5 PIECES)**

**SIMILAR ISB # 313
(7 PIECES)**

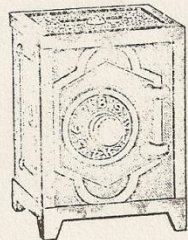
**Manufactured by
KLOTZ
Cira 1915**



Finished in Brass
or Nickel
50c. Seller

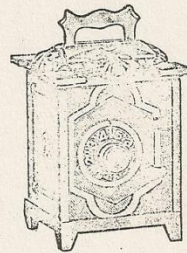
“ARTSTEEL” DOLL FURNITURE
TOPS “AEROWHIRL” TOPS
FIRELESS TORPEDO CANES

Holiday Catalogue on Request

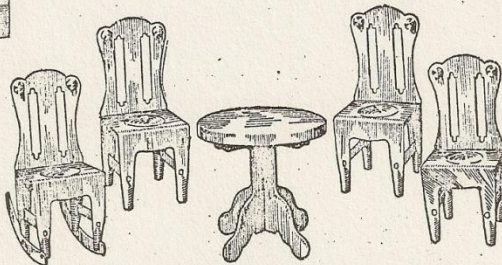


Finished in White
Nickel, Brass, Copper
or Nickel
10c. Seller

**30 Styles and Sizes
of Banks and Safes**
Combination and Locks



Finished in Brass,
Copper or Nickel
15c. Seller



Complete Furniture Sets in colors and sizes for Parlor, Bed-
room, Dining Room and Kitchen
Sells at from 10c. to 50c. each set

Makers of Stamped and Cast Metal Toys
and Mechanical Playthings.

M. E. HARKER, Sales Director
141-145 W. AUSTIN AVE.
CHICAGO



30 Styles and Sizes!!!

DESIGN

- Fluted Columns
- Straight Columns
- Iron Sides
- Steel Sides

CLOSURE

- Key Lock
- Combo Lock

FINISHES

- Nickel
- White Nickel
- Brass
- Copper



“HEXAGON DOOR SAFE W/GRILL”
SIMILAR ISB # 311



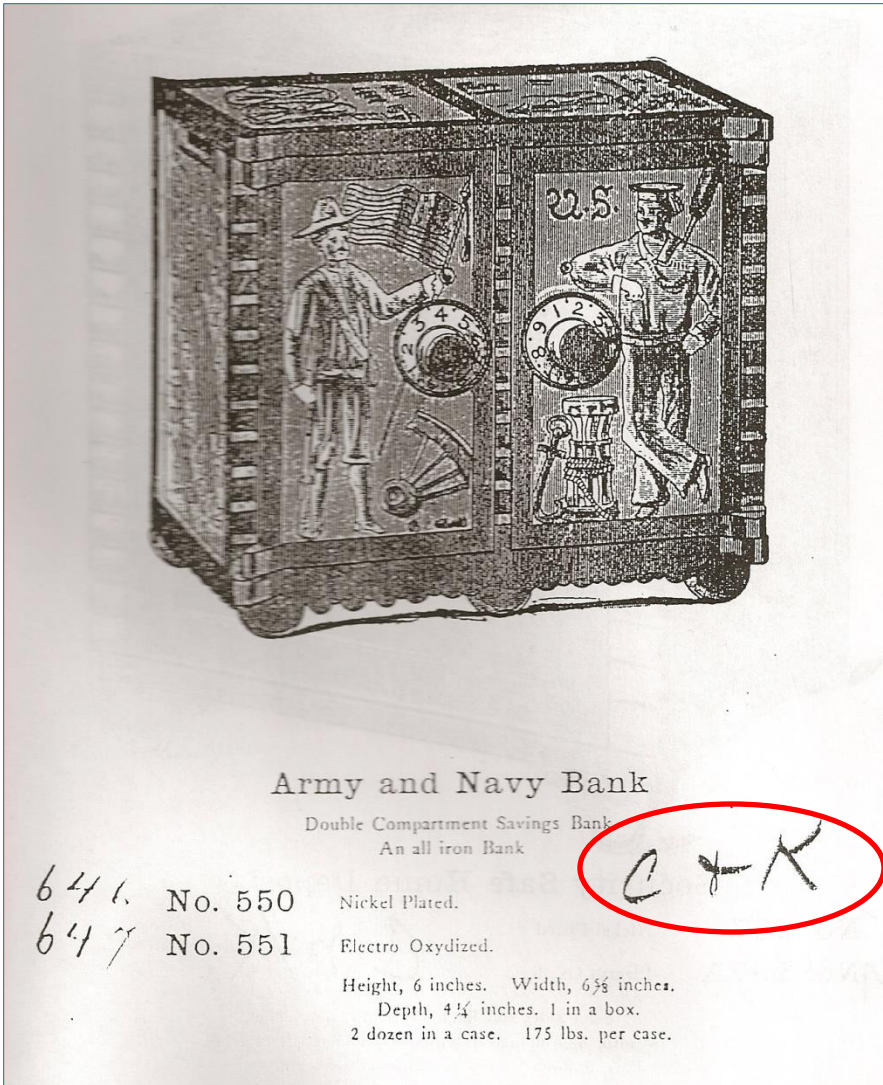
“HEXAGON DOOR SAFE W/GRILL”
SIMILAR ISB # 310

**US ARMY NAVY
BANK
(KEY LOCK)**

ISB UPDATE #3

**Offered by KENTON
1911-1913**





US ARMY NAVY BANK

ISB # 88

Offered by
KENTON
1902-1913

C & K
"COMBO & KEY"



10+ safes offered in "C & K"

1910 KENTON CATALOG ANNOTATED FOR 1911



**THE BANK OF
INDUSTRY
(KEY LOCK)**

UNLISTED

**Offered by KENTON
1911-1913**



Bank of Industry

No. 638—Furnished with Combination Lock. Assorted Colors. All Iron Bank. Height 5½ inches. Width, 4¼ inches. 1 in a box. 3 dozen in a case. 130 lbs. per case.



EVERYTHING BUT SIZE



1933 KENTON CATALOG

THE BANK OF INDUSTRY

ISB #125

Offered by KENTON
1902-1933

ASSORTED COLORS
1933 ONLY!



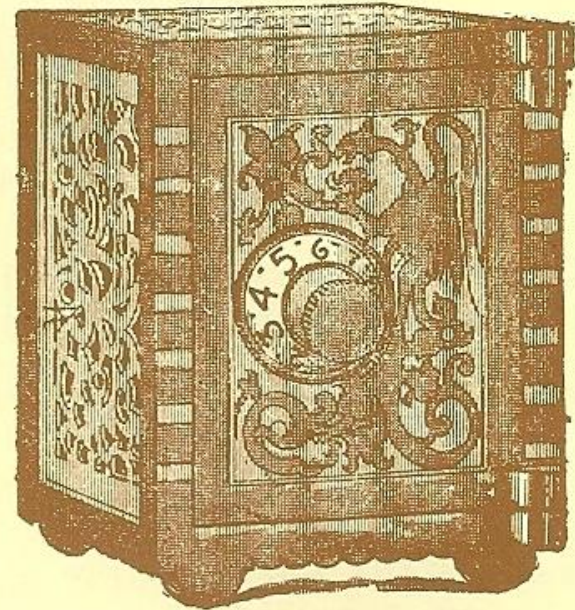
Combination Banks

- No. 612 Steel Sides. Nickel Plated
- No. 613 All Iron. Nickel Plated.
- No. 614 Steel Sides. Electro Oxydized.
- No. 615 All Iron. Electro Oxydized.

Furnished with Combination Lock.
Height $4\frac{1}{4}$ inches. Width $3\frac{3}{4}$ inches.

6 in a box. 1 gross in a case.

220 lbs. per case with steel sides
275 lbs. per case, all iron.



KENTON CATALOG #16

Safe produced in various styles 1902-1926



**“SAVINGS BANK”
(KEY LOCK)**

UNLISTED

**Offered by KENTON
1911-1913**

NOTE

**There is also another unlisted combination variation marked
“THE INDEPENDENT CO. MASSILLON OHIO”**



No. 26.

No. 26. U. S. Navy Bank, $3\frac{1}{2} \times 2\frac{1}{2} \times 2\frac{1}{2}$, Nickel Plated, Key.....\$20.00
No. 26-X. Steel sides and back..... 17.00
Packed 6 in paper box, 1 gross in wood case $8\frac{1}{4} \times 12\frac{1}{4} \times 24\frac{1}{4}$ inches.
Net weight 55 lbs. Gross weight 65 lbs. per case.

1902 ARCADE CATALOG



“US NAVY BANK”

ISB # 90

**Offered by
ARCADE
Cira 1900**

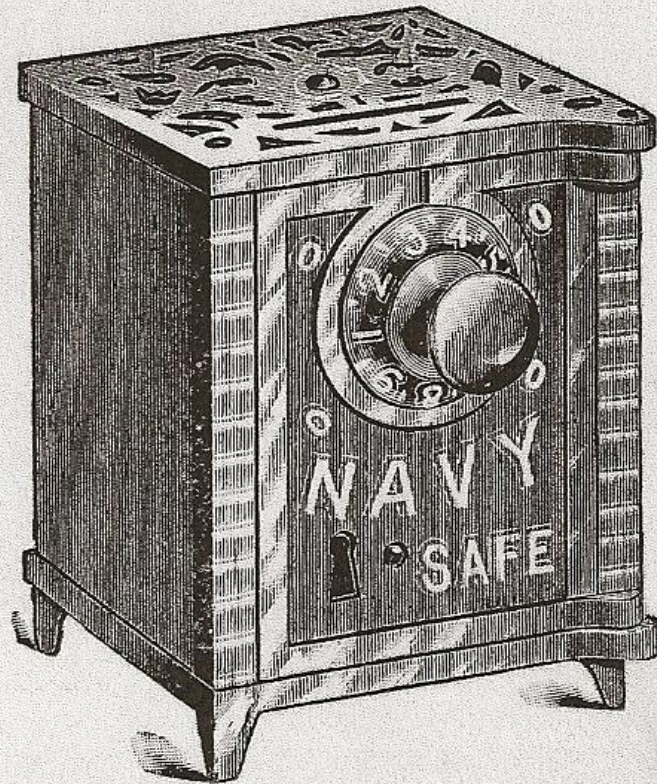
NOTE: Variation with steel sides is harder to find

No. 35. Navy Bank. Has blind combination and good lock and key, steel sides and back. A good seller, nice nickel finish.

Size $3\frac{1}{2} \times 2\frac{1}{2} \times 2\frac{1}{2}$ inches.

Packed 1 dozen in a box.

Per Gross.....*1.00*.....



1898-99 WING CATALOG



“NAVY BANK”

UNLISTED

**Offered by WING
Cira 1900**



**“SAFETY VAULT”
ISB UPDATE #1**

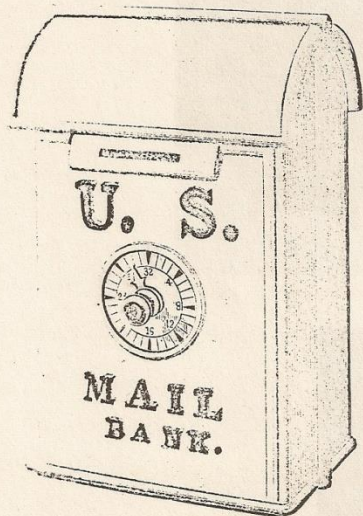


**COIN CATCH
SIMILAR TO
MOORE #834**

PLAYTHINGS

DEVOTED TO THE INTERESTS OF
Dolls, Toys, Games and Kindred Lines

THE HENRY C. NATHAN COMPANY, Publishers, 409 BROADWAY, NEW YORK



U. S. MAIL BANK

SUBSTANTIALLY made in cast iron and nicely finished with Aluminum bronze, exact fac-simile of U. S. Letter Box. Size 6½ inches high, 4¼ inches wide, 2¾ inches deep, weight 3 pounds, 3 ounces. Very unique and attractive design. Has patent up-to-date Combination Lock, equal to Marvin or Herring Safe. Also patent device which positively prevents money being shaken out of opening or slot where coins are deposited.

THE HIT OF THE SEASON

O. B. FISH, Agt.

MANUFACTURER

Hudson and Harrison Streets New York

FOR SALE BY

H. C. SCHNIBBE

641 Broadway, New York

STROBEL & WILKIN CO.

New York, Chicago and Boston

AND ALL LEADING TOY JOBBERS

1903 PLAYTHINGS MAGAZINE

NOTE

Ad states "Patent device which positively prevents money being shaken out".

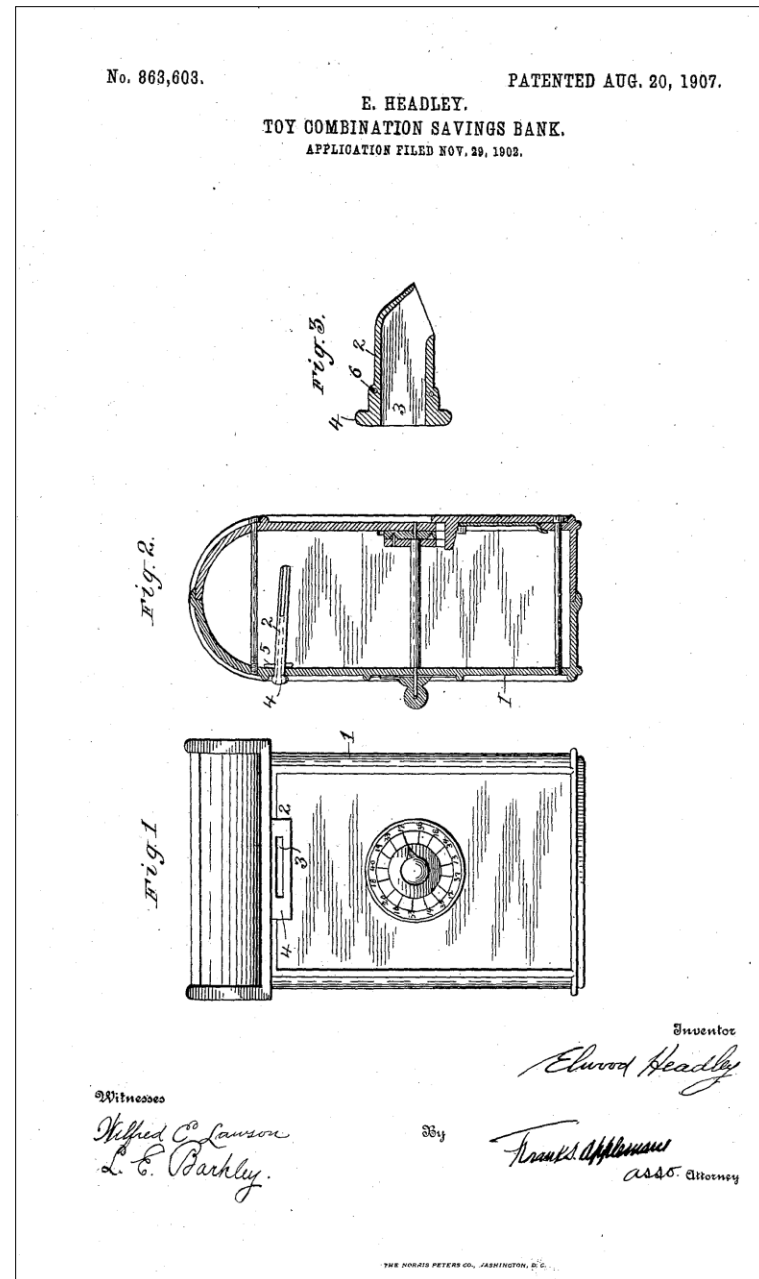
**UTILITY Patent
No. 863,603**

For "coin chute"

**Filed: Nov. 29, 1902
Issued: Aug. 20, 1907**

**Filed by
Elwood Headley**

**Assigned to
William H. McCastline**





“MEDALLION SAFE”
UNLISTED



“MEDALLION SAFE”
ISB # 76



“MEDALLION SAFE”
ISB # 75

NOTE – Both examples are also found with a key lock



PHOTO

MEDALLION SAFE

CONDE, SD BANK AD.

CIRA 1907



“BERT H. PRINTZ SAFE”

UNLISTED

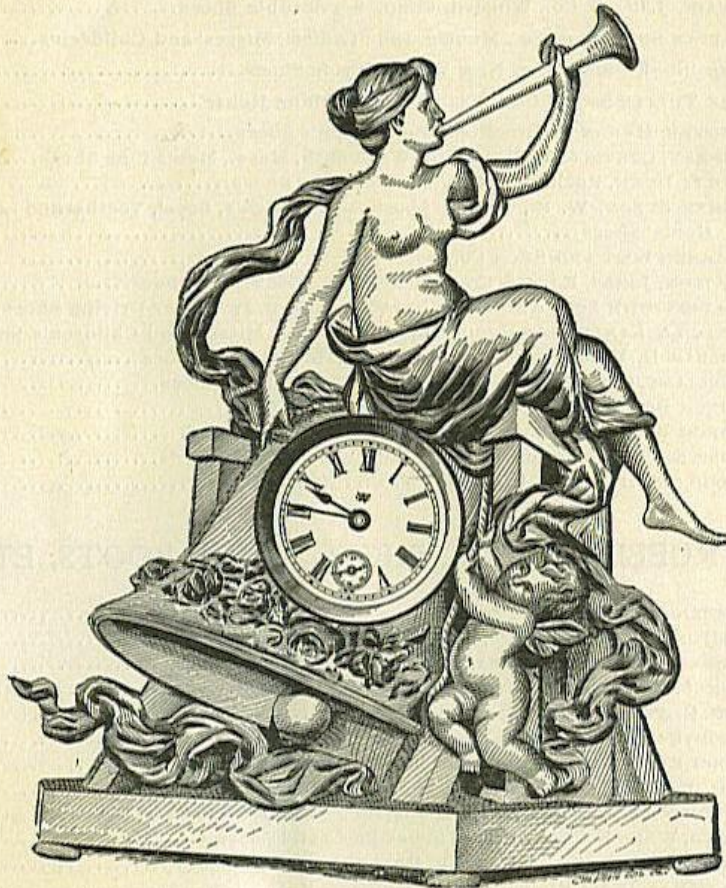
Cira 1895

**Marked
“REGENT MFG”
CO. CHICAGO**

**There are at least 15 different REGENT safes.
Many are unlisted.**

Our Clocks

**Are Like a Pretty Woman—
People Stop to Admire Them.**



If you want to boom spring trade, a nice line of Clocks will bring more business than you ever had before.

The way to advertise now-a-days is by means of premiums.

Up-to-date merchants recognize this and do not wait until customers ask for it, but anticipate their wants.

Nothing cheap about these Clocks except the price. They are modeled after celebrated works of art, are of fine bronze finish and guaranteed movements.

Prices range from \$1.00 to \$1.75—every one cheap enough to give away with sales aggregating \$25.00 to \$40.00.

We furnish all necessary printed matter, such as coupons, handbills, showcards, rubber stamp and ink pad.

Your competitor is willing to spend about three per cent of his profit to get your trade. Better head him off in time to hold your own customers and attract some of his, by putting in an assortment of Clocks at once.

•••

The Regent Mfg. Co.,

Incorporated.

182 and 184 Wabash Ave., Chicago.

Our Catalogue Gives Full Particulars and is Sent Free on Application.
Better Order Some Clocks AT ONCE—They Are All Right.

1897 Advertisement



Slot is inside door.
Window is to view savings.

“CHROMOTIZED METAL TIME LOCK SAFE”
UNLISTED

THE GUARANTEED LINE

COMBINATION BANKS.



PATENT PENDING
No. 65.

Entirely New Designs.
Something Absolutely Different from the
Old Style Banks.
Very Handsomely Designed
and Finished.

No. 65. Polished and Nickel Plated.
No. 65A. Polished and Oxidized.

Height, 5 1/4 inches.
Width, 4 inches.
Depth, 4 inches.

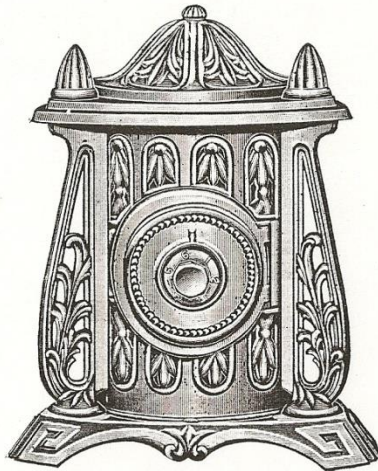
1 in a carton.
3 dozen in a case
100 lbs. per case

A Particularly Handsome Bank of New
and Novel Design.
Beautifully Modeled and Finished.
Attractive to Old and Young.
Perfectly Proportioned.
Best Combination Lock.

No. 90. Polished and Nickel Plated.
No. 90A. Polished and Oxidized.

Height, 6 1/4 inches.

1 in a carton.
3 dozen in a case.
120 lbs. per case.



PATENT PENDING
No. 90.

1915 GREY IRON CASTING CO. CATALOG

TOP SAFE IS ISB # 171

BOTTOM SAFE UNLISTED

WAS IT EVER MADE?

**PHOTOGRAPHED AT
2005 CONVENTION
LANCASTER, PA**

AUGUST 2005 PBP



A TERRIFIC "F" SAFE

**What other safe banks are
out there yet
to be re-discovered?**